

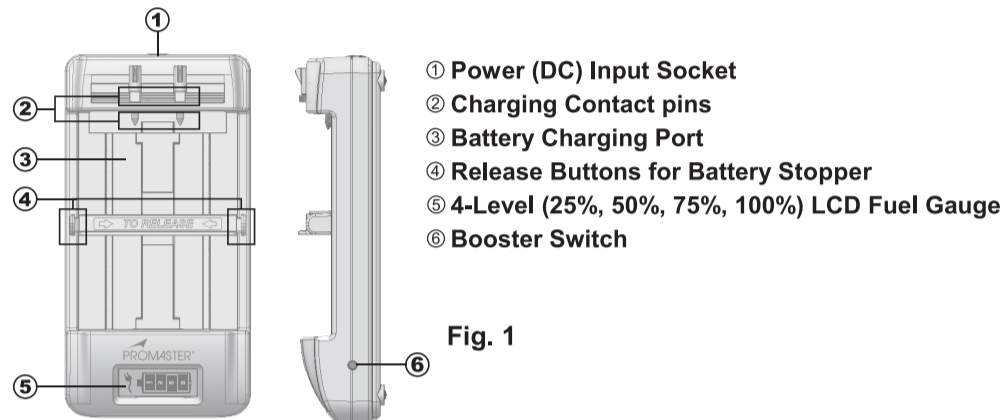


Universal Lithium Ion Battery Charger

(For 3.6V ~ 7.4V Digital Camera, Camcorder & Cell Phone Batteries)

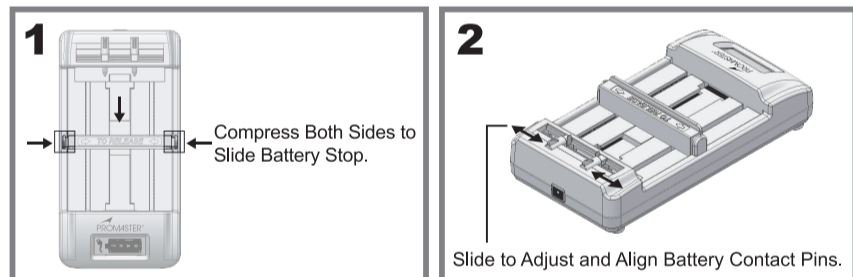
PLEASE READ THE INFORMATION AND FOLLOW ALL INSTRUCTIONS THOROUGHLY BEFORE USING THIS PRODUCT.

PRODUCT ILLUSTRATION

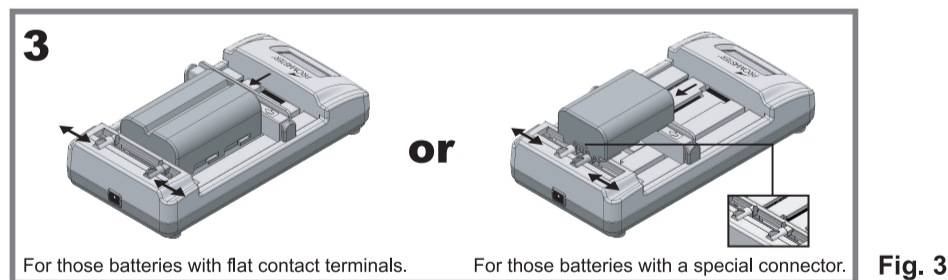


OPERATING INSTRUCTIONS

1. Connect barrel-plug end of the AC adapter in this package or connect barrel-plug end from the DC Power Cord (included in the OPTIONAL Travel Accessory Kit which is sold separately) into Power Input socket ① of this universal charger and the other end into a household AC outlet. The AC plug symbol in the LCD display ⑤ of the charger will appear as soon as the charger unit is connected to a power source to indicate it is ready for use.
2. Compress the release buttons at both sides of the battery stop and slide it back to the end next to the LCD display.
3. Insert the Li-Ion battery you wish to charge onto the Battery Charging Port ③. Align charger's contact pins with the + and - terminals as indicated on the battery. Some batteries may have a 3rd or 4th terminal. It is not necessary to connect charger's contact pins with these terminals. The charger will automatically detect the polarity and voltage of the battery for proper charging.



4. Some batteries have a special connector for the + and - terminals. To charge this type of battery, refer to Fig 3 to choose the correct type of contact pins for charging your battery.



5. Compress release buttons ④ at both sides and slide the battery stop against the end of the battery to hold the battery in place.
6. You will know you have made proper contact when the LCD Fuel Gauge display ⑤ shows the capacity of your battery and indicates that the charger has begun to quick charge your battery.

4-Level Fuel Gauge (Charge Indicator) :

- When the 25% symbol stays solid and the fuel gauge is running in between 50% and 100%, it means the battery is charged to more than 25% of its rated capacity.
- When the 50% symbol stays solid and the fuel gauge is running in between 75% and 100%, it means the battery is charged to more than 50% of its rated capacity.
- When the 75% symbol stays solid and only the 100% symbol remains flashing, it means the battery is charged to more than 75% of its rated capacity.
- When the entire fuel gauge in the battery symbol is solid, it indicates the battery is fully charged.

7. Due to the protection circuitry built in a Li-Ion battery, some Li-Ion batteries that have not been used for an extended period of time may have very low or zero voltage and are detected as defective batteries. To re-activate this kind of battery and charge it properly & safely, press the "Booster Switch" ⑥ located on the right side of this charger (next to the LCD display) for at least 10 seconds once you have inserted the battery. It may be necessary to repeat the boost procedure several times to successfully re-activate a battery. If the battery still does not begin to charge after performing the boost procedure 3~5 times, the battery may be faulty or dead and should be discarded. All rechargeable batteries can only be used a specific number of cycles before they wear out and require replacement.
8. As soon as the battery is fully charged, the charger will switch to the "TRICKLE CHARGING" mode.
9. Due to the advanced charging technology being used, it is safe to leave your battery in the charger after it is fully charged. To avoid unnecessary power consumption and prolong the operating life of the charger and its AC adapter, we do not recommend leaving the battery in the charger for the extended periods of time.

IMPORTANT NOTES

1. All batteries will naturally discharge themselves over time even if they are not in use. To prolong their service life, it is recommended that you do not let a battery sit idle for more than two months without recharging. Also due to the self-discharge, be sure to recharge your batteries before you plan to use them.
2. Batteries, AC adapter and the charger will get warm during charge. This is normal.
3. If the charger does not charge the battery, check to see if the battery is dead, faulty or worn out. All rechargeable batteries will eventually wear out after being used for a certain numbers of cycles.
4. Always keep metal contacts on both charger and battery clean by wiping the surfaces with a dry, soft and clean cloth.
5. Remove your battery from the digital camera or camcorder after use. These devices will continue to drain a small current from your battery even if they are turned off.

TROUBLE SHOOTING

SHOULD YOU ENCOUNTER A PROBLEM CHECK THE FOLLOWING CAREFULLY BEFORE SENDING THE TESTER FOR REPAIR.

The charging indicator does NOT display when the charger is powered and the battery has been inserted

- Battery contacts may not be touching contacts on the charger properly. Unplug the charger from the power source and check that the battery is properly seated on the charger.
- Check to make sure metal contacts of both charger and battery are clean.
- Try charging another battery on this charger. If the charger works with a different battery, the 1st battery is either faulty or dead.

The battery takes a very short time to reach full charge

- There may be still some power left in the battery prior to being charged.
- The battery is getting old and should be replaced.

The battery provides a much shorter operating time after being fully charged

- The battery may have sat idle without being charged for too long time.
- The battery is worn out and about to reach the end of its service life. All rechargeable batteries will eventually wear out after being used for a certain number of cycles.

IMPORTANT WARNING

This universal charger is designed for charging 3.6V ~ 7.4V rechargeable Li-Ion batteries ONLY! Inserting any other type of battery may damage the device, destroy the battery and/or cause injury to the user.

CAUTIONS

- Always unplug the charger when not in use.
- Always unplug the charger from the power source before cleaning.
- Always replace frayed or damaged wire and broken plugs immediately.
- Do not use, place or store the charger where it may come into contact with water or moisture.
- Do not use in a car when it is unattended or under direct sun.
- Do not short-circuit the + and - terminals of the battery and charger.
- Do not disassemble, deform or reconstruct any part of this charger.
- Use this charger with the specified type of Li-Ion batteries only.
- Use this charger with the AC adapter included in the package only.
- It is not necessary or recommended to discharge a Li-Ion battery prior to charging.

SPECIFICATIONS

Input Power : 12~24VDC, Min. 10W
Output Power : 4.2V/8.4V DC, Max. 950mA (with Auto. Detection)

ESTIMATED CHARGE TIME

Battery Capacity	Approximate Charge Time
3.7V, 700 mAh	65 minutes
3.7V, 1200 mAh	100 minutes
7.4V, 1200 mAh	105 minutes
7.4V, 1800 mAh	145 minutes
7.4V, 2400 mAh	190 minutes
7.4V, 3600 mAh	270 minutes

ONE YEAR UNCONDITIONAL WARRANTY

If for any reason, this ProMaster product fails within ONE YEAR of the date of purchase, return this product to your ProMaster dealer and it will be exchanged for you at no charge. ProMaster products are guaranteed for ONE FULL YEAR against defects in workmanship and materials. If at any time after one year, your ProMaster product fails under normal use, we invite you to return it to ProMaster for evaluation.

www.promaster.com
Fairfield, CT 06825

Code 7011

Made in Taiwan